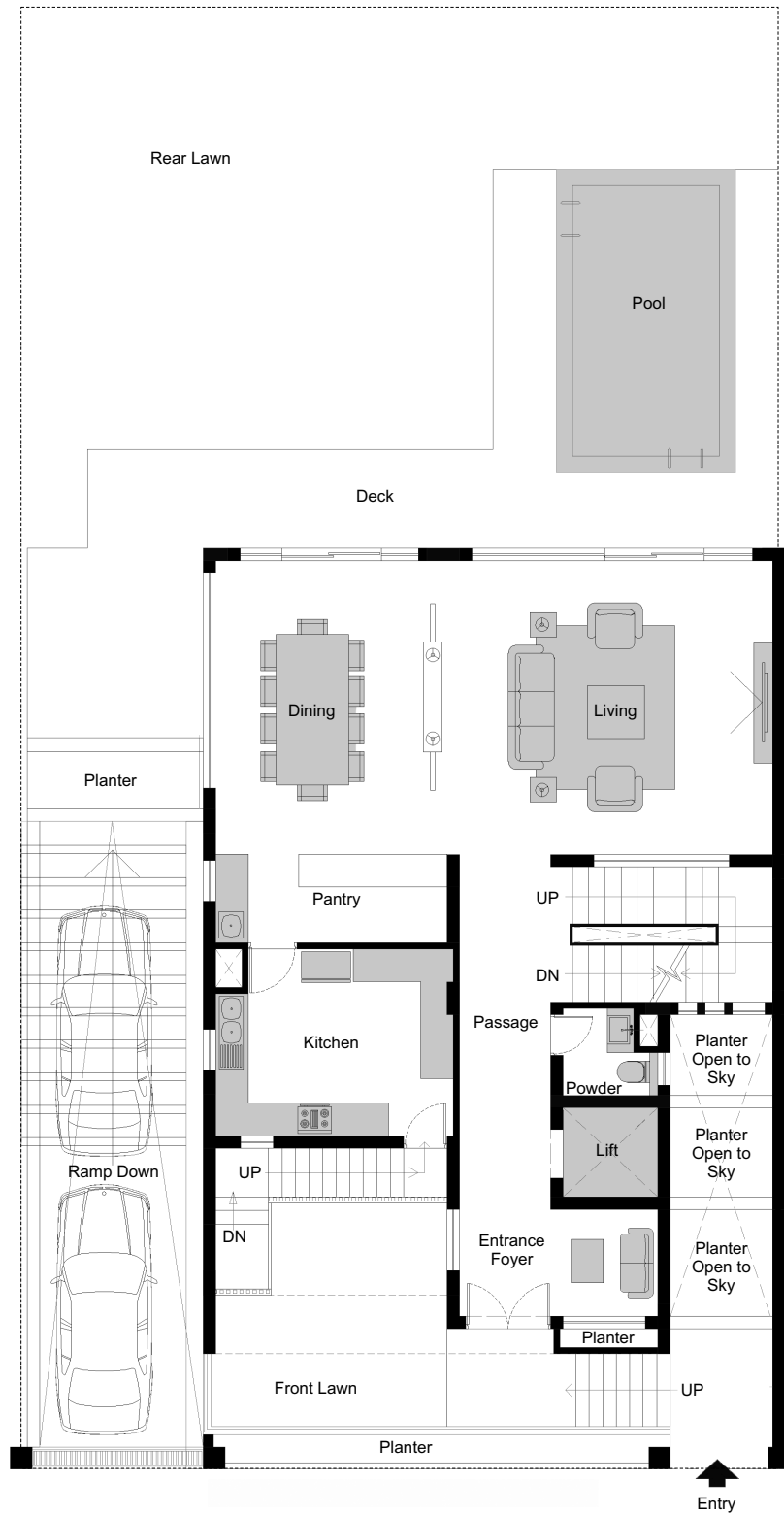


Whistling Palms Floor Plan

Ground Floor Plan



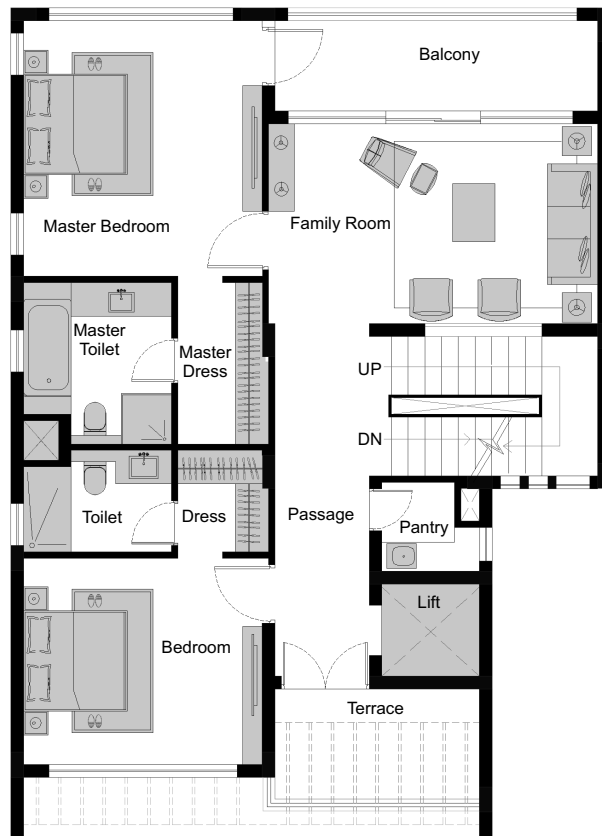
	MM	Feet-Inch
Dining	4505 x 5425	14'-9" x 17'-10"
Living	5785 x 5425	19'-0" x 17'-10"
Pantry	4505 x 1630	14'-9" x 5'-4"

	MM	Feet-Inch
Kitchen	4390 x 3450	14'-5" x 11'-4"
Passage	1685 Wide	5'-6" Wide
Powder	1750 x 1605	5'-9" x 5'-3"

	MM	Feet-Inch
Lift	1750 x 1650	5'-9" x 5'-5"
Entrance Foyer	3665 x 1970	12'-0" x 6'-6"

Whistling Palms Floor Plan

First Floor Plan



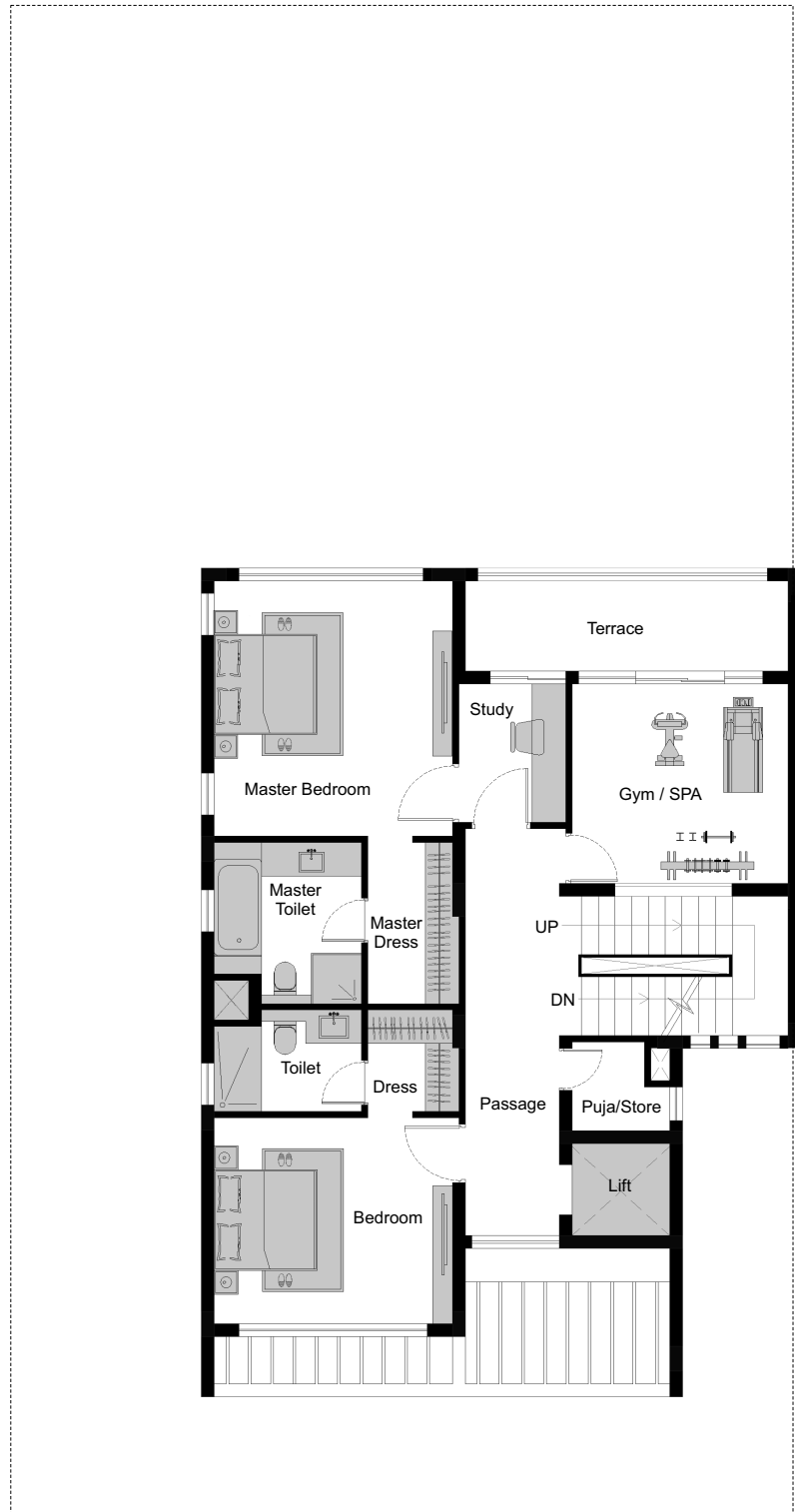
	MM	Feet-Inch
Master Bedroom	4275 x 4580	14'-0" x 15'-0"
Bedroom	4275 x 3695	14'-0" x 12'-1"
Balcony	5785 x 1850	19'-0" x 6'-1"
Terrace	3665 x 2185	12'-0" x 7'-2"

	MM	Feet-Inch
Family Room	5900 x 3575	19'-4" x 11'-9"
Master Toilet	2645 x 2890	8'-8" x 9'-6"
Toilet	2645 x 1820	8'-8" x 6'-0"
Master Dress	1630 x 2890	5'-4" x 9'-6"

	MM	Feet-Inch
Dress	1630 x 1820	5'-4" x 6'-0"
Passage	1685 Wide	5'-6" Wide
Pantry	1750 x 1605	5'-9" x 5'-3"
Lift	1750 x 1650	5'-9" x 5'-5"

Whistling Palms Floor Plan

Second Floor Plan



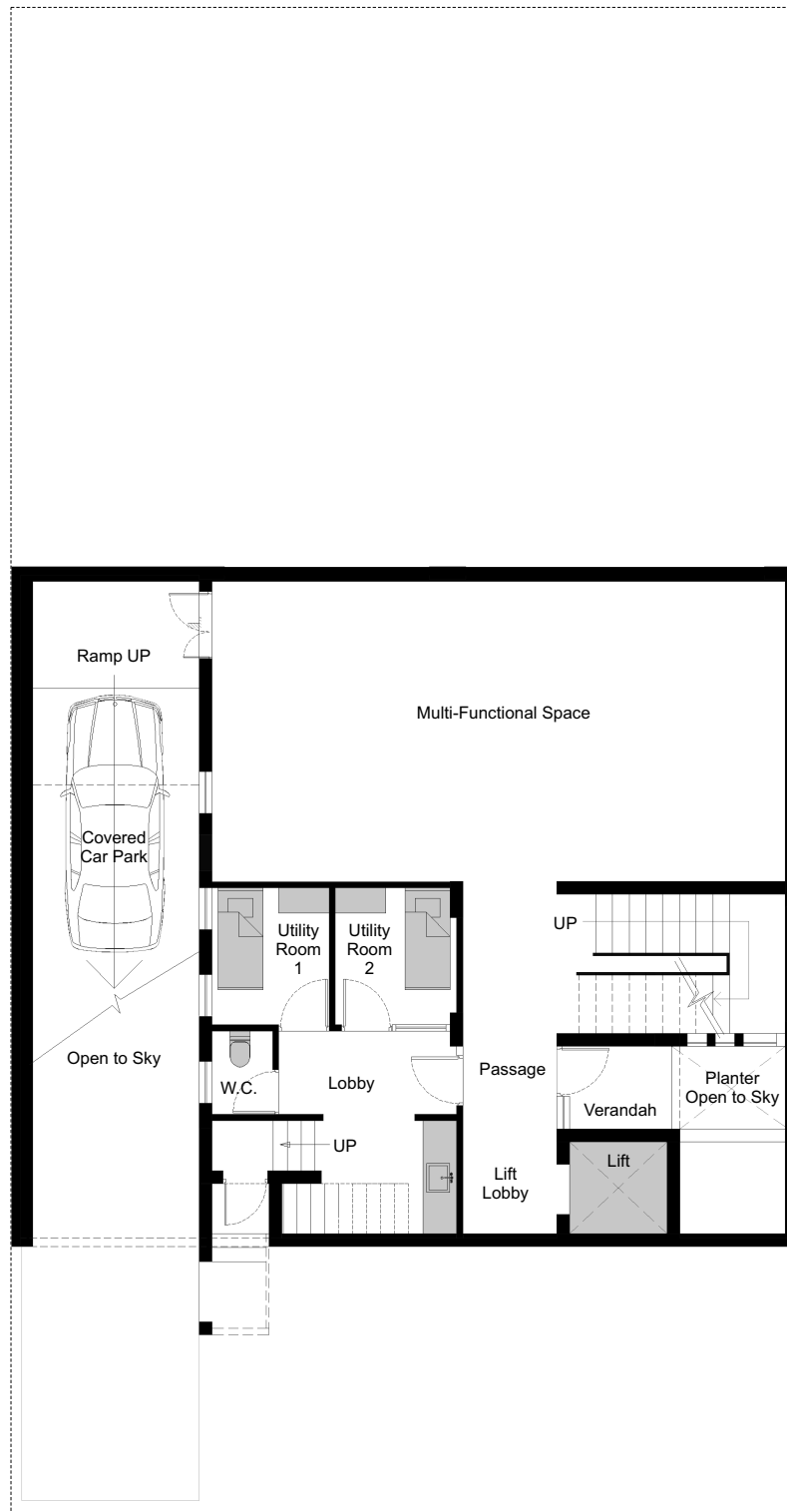
	MM	Feet-Inch
Master Bedroom	4275 x 4580	14'-0" x 15'-0"
Bedroom	4275 x 3695	14'-0" x 12'-1"
Terrace	5785 x 1850	19'-0" x 6'-0"
Study	1915 x 2480	6'-3" x 8'-2"

	MM	Feet-Inch
Gym / SPA	3870 x 3575	12'-8" x 11'-9"
Master Toilet	2645 x 2890	8'-8" x 9'-6"
Toilet	2645 x 1820	8'-8" x 6'-0"
Master Dress	1630 x 2890	5'-4" x 9'-6"

	MM	Feet-Inch
Dress	1630 x 1820	5'-4" x 6'-0"
Passage	1685 Wide	5'-6" Wide
Puja/Store	1750 x 1600	5'-9" x 5'-3"
Lift	1750 x 1650	5'-9" x 5'-5"

Whistling Palms Floor Plan

Basement Floor Plan



	MM	Feet-Inch
Multi Functional Space	10290 x 5390	33'-9" x 17'-8"
Utility Room 1	2455 x 2100	8'-1" x 6'-11"
Utility Room 2	2455 x 2175	8'-1" x 7'-2"

	MM	Feet-Inch
W.C.	1495 x 1085	4'-11" x 3'-7"
Passage	1685 Wide	5'-6" Wide
Lobby	3190 x 2740	10'-6" x 9'-0"

	MM	Feet-Inch
Lift	1750 x 1650	5'-9" x 5'-5"
Verandah	1980 x 1485	6'-6" x 4'-10"